

Floor Stand Interactive LCD Digital Signage Advertising Display Totem Wayfinding 32 43 49 50 Inch Touch Screen

Basic Information

- Place of Origin: Shen Zhen
- Brand Name: BOE
- Certification: CE/ FCC/UL/ ROHS
- Model Number: G32 43 50



Product Specification

- Product Name: Floor Standing Digital Signage
- Size: 32/43/49/50 Inch
- Specification: Stretch Bar, Digital Poster, Touch Screen, Kiosk
- Color: Black Or White
- Supplier Type: Original Manufacturer, ODM, OEM
- Touch Screen Type: Capacitive, Infrared
- Operation System: Android Or Windows
- Highlight: **49 50 Inch LCD Monitor ,
43 50 Inch LCD Monitor ,
High Brightness 49 lcd monitor**



Product Description

Floor Stand Interactive LCD Digital Signage Advertising Display Totem Wayfinding 32 43 49 50 Inch Touch Screen

A Leading Manufacturer of 50-Inch LCD Monitors for Outdoor Environments

skipoul has emerged as a leading manufacturer of 50-inch LCD monitors specifically designed for outdoor environments. With their cutting-edge technology, robust construction, and exceptional performance, 50-inch LCD monitors are revolutionizing outdoor advertising and communication.

Built to Withstand The Elements

skipoul understands these challenges and has engineered their 50-inch LCD monitors to withstand the elements. These displays are equipped with weatherproof and durable construction, ensuring reliable performance in various outdoor settings.

High Brightness And Optimal Visibility

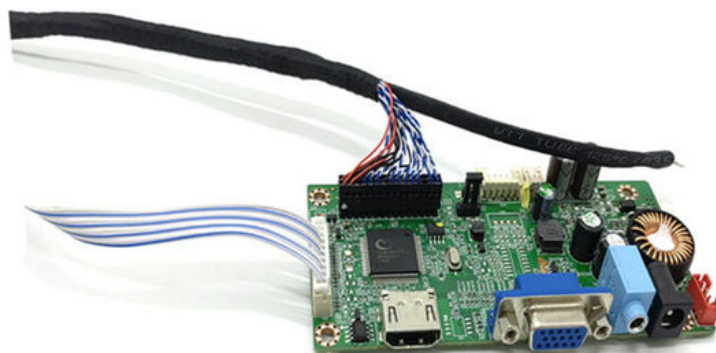
One of the key features of skipoul 50-inch LCD monitors is their high brightness levels. These displays are designed to deliver exceptional visibility even in bright sunlight. With high brightness ratings and anti-glare coatings, the monitors minimize glare and reflections, allowing viewers to see the content clearly from different angles and distances.

Customization And Flexibility

skipoul understands that different outdoor advertising and signage applications have unique requirements. To cater to these diverse needs, they offer customization options for their 50-inch LCD monitors. This includes options for various mounting solutions, such as wall-mounted displays, freestanding kiosks, or integrated into existing structures. Additionally, the monitors can be customized to include touch functionality, enabling interactive experiences for users.

skipoul 50-inch LCD monitors are designed for continuous and reliable operation. skipoul has established itself as a leading manufacturer of 50-inch LCD monitors for outdoor environments.

32 43 49 50 Inch LCD Monitor	
Brand	Open/OEM
Product Color	Black
Backlight source	LED
Screen size	32 49 50 inch
Screen proportion	(16:9)
Backlight	LED
Resolution	1920*1080p
Brightness	2000cd/m2
Contract	1300:1
Viewing angle	H:178°V:178°
Color temperature	16.7M
Brushing	60Hz
Scanning method	Progressive scan
Response Time	2ms
Other interfaces	HDMI/AC220V
Power	
Environmental conditions	Work temperature: -10 to 70°C
	Working humidity: -10 to 70°C
	Save temperature: -10 to 70°C
	Save humidity: -10 to 70°C
Power	110V-240V -DC12V
	electricity:220V
	Machine power consumption: 100W



FAQ

Q:How can I get the price?

A:We usually give you a quotation within 24 hours after receiving the inquiry (except weekends and holidays), if you need a quotation urgently, you can contact us by mail or other means.

Q:What is the minimum order?

A:Our company mainly deals in wholesale business,but if you insist on buying one, or you only need one set,we will also deliver the goods to you.

Q:Can I buy a prototype to test before buying in bulk?

A:Yes, please feel free to contact us.

Q:What payment methods do you accept?

A:Our company supports most payment methods, but usually accepts T/T, PayPal.

Q:What are your shipping methods?

A:We support sea, air, rail transportation and express delivery, and also support customers to use their own logistics forwarders. Please confirm with us before placing an order.

Q:I would like to ask you if it's possible to have my logo on the product.

A:Yes, we support OEM and special customization, so we can design, produce and process according to customer's requirements. Of course, custom logos on the box and instruction manual are also included.

Q:What is your delivery time?

A:It depends on your order quantity and order season. Usually small quantities will be shipped within 5 to 15 days, and large quantities will be delivered within about 30 days. All in all, the delivery time will not exceed the time agreed between us and the buyer.



Touch Vision (Shenzhen Sufeida) Technology Co., Ltd.



+86 18566758749



cnsfdlhx@monitortp.com



monitorspcs.com

605, Workshop C, No.1, East Industrial District, Shangxue Science park, Xinxue Community, Bantian Street,
Longgang District, Shenzhen, China