

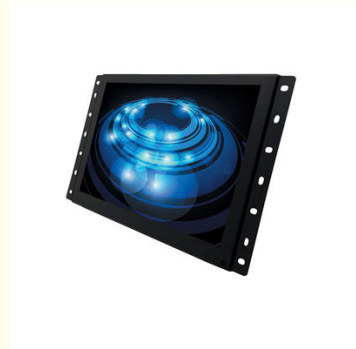
Open Frame Industrial HD 21.5 Inch Touch Screen Monitor Custom Embedded Monitor

Our Product Introduction

for more products please visit us on monitorspcs.com

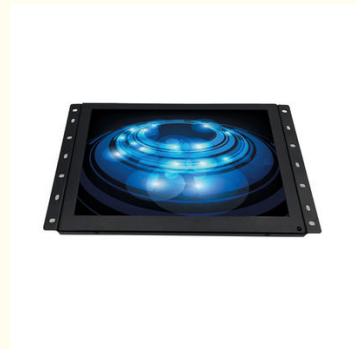
Basic Information

- Place of Origin: Shen Zhen
- Brand Name: Skipsoul
- Certification: CE/ FCC/UL/ ROHS
- Model Number: TC215
- Payment Terms: T/T, Western Union, MoneyGram, PayPal



Product Specification

- Product Name: 21.5 Inch Touch Monitor
- Screen Size (inches): 21.5 Inch Touch Screen Monitor
- Product Color: Black/Custom
- Backlight: LED Backlight
- Resolution: 1920*1080
- Screen Proportion: 16:9
- Brightness: 250cd/m2
- Viewing Angle: H:178°V:178°
- Signal Interface: H+V
- Touch Type: Multi-Touch Projected Capacitive
- Highlight: Industrial 21.5 inch touch screen monitor,
Open Frame 21.5 inch touch screen monitor,
Embedded 21.5 touchscreen monitor



More Images



Product Description

Industrial Touch Open HD 21.5 Inch Touch Monitor Custom Embedded Monitor

Introducing our cutting-edge 21.5-inch touch monitor with an open-frame design, revolutionizing interactive displays for a wide range of applications. This feature-packed monitor combines the immersive experience of a 21.5-inch Full HD display with the seamless touch functionality that sets it apart from the competition.

With its expansive 21.5-inch screen, our touch monitor offers ample space for content presentation, making it ideal for digital signage, interactive kiosks, gaming machines, and industrial control systems. The high-resolution display ensures crisp visuals, while the wide viewing angle technology guarantees excellent image quality from any perspective.

Our Product

The 21.5-inch touch monitor boasts an open-frame design, allowing for easy integration into existing setups or custom enclosures. Its versatility is further enhanced by multiple connectivity options, including HDMI, VGA, and USB ports, ensuring seamless compatibility with a variety of devices and systems.

Equipped with advanced touch technology, this monitor delivers a responsive and accurate touch interface, supporting multi-touch gestures for intuitive interactions. Whether it's pinching, zooming, or swiping, the touch monitor provides a smooth and natural user experience.

Durability is a top priority, and our 21.5-inch touch monitor is built to withstand the rigors of daily use. Constructed with high-quality materials, it ensures long-lasting performance, making it suitable for demanding environments.

Installation is a breeze with the open-frame design, simplifying the integration process and reducing setup time. This makes our touch monitor an efficient and cost-effective solution for integrators and system designers.

Open HD 21.5 Inch Touch Monitor Custom Embedded Monitor	
Brand	21.5 Inch Touch Monitor
Product Color	Black
Backlight source	TFT
Screen size	HD 21.5 Inch Open Monitor IPS
Screen proportion	16:9
Backlight	LED
Resolution	1080p
Brightness	250 cd/m2
Contract	1300:1
Viewing angle	H:178°V:178°
Color temperature	16.7M
Brushing	60Hz
Scanning method	Progressive scan
Response Time	2ms
Other interfaces	HD / VGA
21.5 Inch Open Monitor	
Environmental conditions	Work temperature: -0 to 60°C
	Working humidity: -0 to 60°C
	Save temperature: -0 to 60°C
	Save humidity: -0 to 60°C
Power	DC
	electricity: 4A
	Machine power consumption: 29 W





FAQ

Q: How can I get the price?

A: We usually give you a quotation within 24 hours after receiving the inquiry (except weekends and holidays), if you need a quotation urgently, you can contact us by mail or other means.

Q: What is the minimum order?

A: Our company mainly deals in wholesale business, but if you insist on buying one, or you only need one set, we will also deliver the goods to you.

Q: Can I buy a prototype to test before buying in bulk?

A: Yes, please feel free to contact us.

Q: What payment methods do you accept?

A: Our company supports most payment methods, but usually accepts T/T, PayPal.

Q: What are your shipping methods?

A: We support sea, air, rail transportation, and express delivery, and also support customers to use their own logistics forwarders. Please confirm with us before placing an order.

Q: I would like to ask you if it's possible to have my logo on the product.

A: Yes, we support OEM and special customization, so we can design, produce, and process according to customer's requirements. Of course, custom logos on the box and instruction manual are also included.

Q: What is your delivery time?

A: It depends on your order quantity and order season. Usually, small quantities will be shipped within 5 to 15 days, and large quantities will be delivered within about 30 days. All in all, the delivery time will not exceed the time agreed between us and the buyer.

TKCM Touch Vision (Shenzhen Sufei) Technology Co., Ltd.

+86 18566758749

cnsfdlhx@monitortp.com

monitorspcs.com

605, Workshop C, No.1, East Industrial District, Shangxue Science park, Xinxue Community, Bantian Street, Longgang District, Shenzhen, China